

| | | |
|------|---------------|--------|
| REV. | ECN. NO. | APPD. |
| A | BC-08-7130674 | Hao Gu |

NOTES:

1.MINI DIN CONNECTOR SPECIFICATION:

1.1 GENERAL CHARACTERISTICS:

- 1.1.1 CURRENT RATING: 1A MAX.
- 1.1.2 VOLTAGE RATING: 30 V
- 1.1.3 OPERATE TEMPERTAURE: -20°C TO 70°C.

1.2 MECHANICAL CHARACTERISTICS:

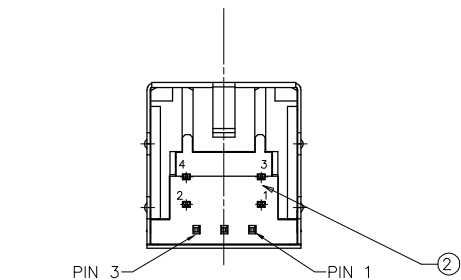
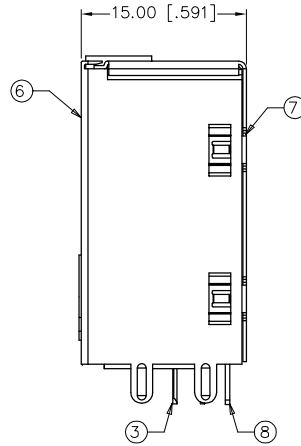
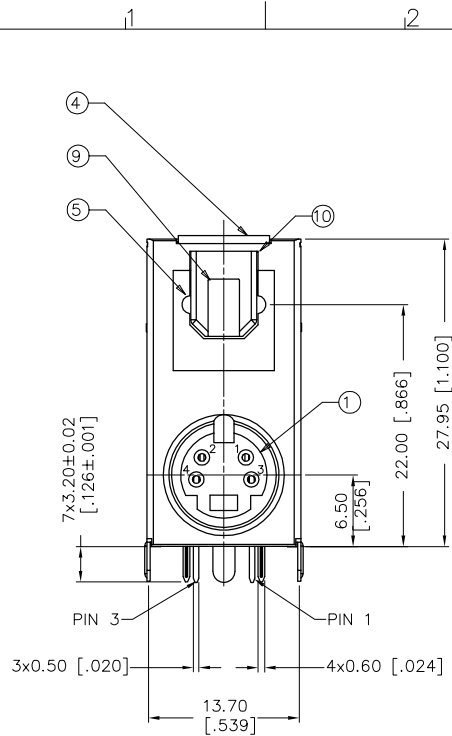
- 1.2.1 MATING FORCE: 45N(4.5 kgf) MAX..
- 1.2.2 UNMATING FORCE: 9~27N(0.90~2.70 kgf).
- 1.2.3 DURABILITY: 500 CYCLES

1.3 ELECTRICAL CHARACTERISTICS:

- 1.3.1 LOW LEVEL CONTACT RESISTANCE: 30 mOHMS (MAX.).
- 1.3.2 INSULATION RESISTANCE: 1000 MOHMS (MIN.).
- 1.3.3 DIELECTRIC WITHSTANDING VOLTAGE: AC 750V RMS MIN.

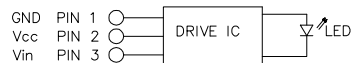
2. AC-3 CONNECTOR SPECIFICATION:

- 2.1 SUPPLY VOLTAGE: -0.5 ~ 5.25 V.
- 2.2 DC INPUT VOLTAGE: -0.5 ~ Vcc+0.5 V.
- 2.3-1 OPERATING TEMPERATURE: -20°C TO 70°C.
- 2.3-2 STORAGE TEMPERATURE: -40°C TO 70°C.
- 2.4-3 HUMIDITY : 5%~95%



- 2.4 TRANSMISSION SPEED: 13.2 Mbps MAX
- 2.5 MATING FORCE: 40N(4.0 kgf) MAX.
- 2.5 UNMATING FORCE: 6~40N(0.6~4.0 kgf)
- 2.6 SOLDERING TEMPERATURE: WAVE SOLDER: 260°C MAX. 3~5 SECONDS
- 2.7 AS ASSEMBLY, THE STATIC PREVENTION IS NECESSARY TO AVOID DAMAGING IC OR LED.
- 2.8.FUNCTION STEPS:
STEP1: INPUTING THE Vcc (AT ② LOCATION)
STEP2: INPUTING THE Vin (AT ③ LOCATION)

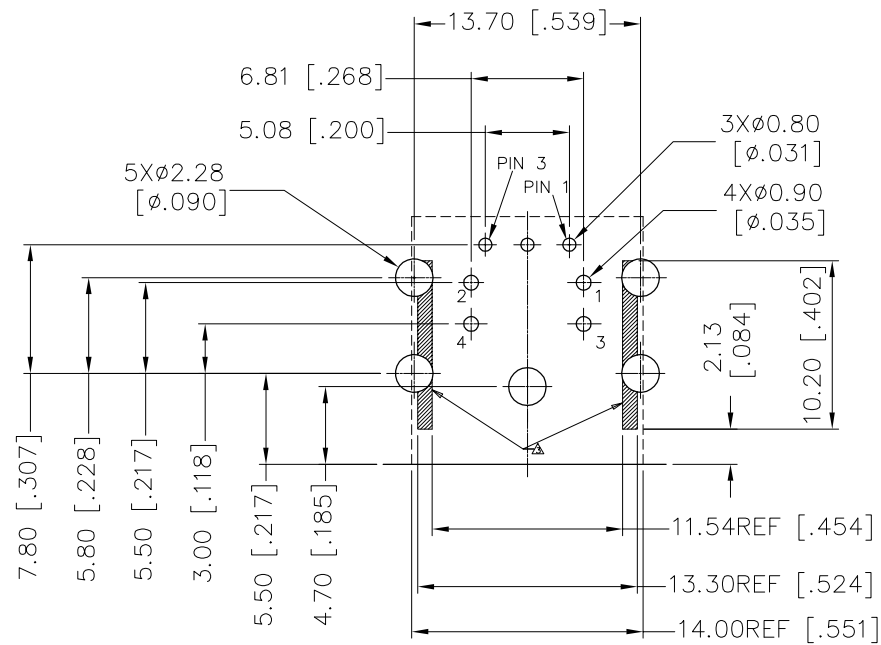
LED PIN FUNCTION



| ITEM | DESCRIPTION | Q'TY | MATERIAL | FINISH | REMARK |
|------|---------------------|------|------------------------------------|---|--------|
| 10 | SPRING | 1 | STAINLESS STEEL | NONE | |
| 9 | AC-3 DOOR | 1 | THERMOPLASTIC;UL94V-0 HIGH TEMP | MOLDED GRAY | |
| 8 | LED | 3 | AlGaAs LED & DRIVE IC COPPER ALLOY | LEAD FREE TIN ALLOY PLATING | |
| 7 | REAR SHELL | 1 | COPPER ALLOY | NICKEL PLATING | |
| 6 | FRONT SHELL | 1 | COPPER ALLOY | NICKEL UNDERPLATING LEAD FREE TIN ALLOY PLATING. | |
| 5 | AC-3 BOTTOM HOUSING | 1 | THERMOPLASTIC;UL94V-0 HIGH TEMP | MOLDED BLACK | |
| 4 | AC-3 TOP HOUSING | 1 | THERMOPLASTIC;UL94V-0 HIGH TEMP | MOLDED BLACK | |
| 3 | MINI DIN CONTACT | 4 | COPPER ALLOY | GOLD FLASH AT CONTACT AREA. LEAD FREE TIN ALLOY PLATING AT CONTACT TAIL, OVER NICKEL UNDERPLATING | |
| 2 | MINI DIN SPACER | 1 | THERMOPLASTIC;UL94V-0 HIGH TEMP | MOLDED BLACK | |
| 1 | MINI DIN HOUSING | 1 | THERMOPLASTIC;UL94V-0 HIGH TEMP | MOLDED BLACK | |

| X. | ± | X'. | ± | UNITS | mm [INCH] | NAME(INTENDED USE) | FOXCONN HON HAI PRECISION IND. CO.,LTD. TAIPEI, TAIWAN, R.O.C. | |
|--|---|--------|---|--------|-----------|------------------------|---|-----------------------|
| .X | ± | .X' | ± | MAT'L | | CUSTOMER | | |
| .XX | ± | .XX' | ± | | N/A | PART NO.(INTENDED USE) | TITLE: | |
| .XXX± | | .XXX'± | | FINISH | | 2F12TC1-ES93-4F | MINI DIN 4PIN W/GROUNDING OVER AC-3 STACK | |
| <small>THESE DRAWINGS AND SPECIFICATIONS ARE THE PROPERTY OF HON HAI PRECISION IND. CO., LTD. AND SHALL NOT BE REPRODUCED COPIED OR USED IN ANY MANNER WITHOUT THE PRIOR WRITTEN CONSENT OF HON HAI PRECISION IND. CO., LTD.</small> | | | | | | | APPD: Adward Zheng 10/16'08 | DWG NO.: 371-0000-195 |
| | | | | | | | CHKD: Jesse Wang 10/16'08 | |
| | | | | | | | DR: ShuYu Li 10/16'08 | |

| SCALE | SHEET | REV. |
|-------|-------|------|
| N/A | 1/2 | A |



RECOMMENDED P.C.BOARD LAYOUT
(COMPONENT SIDE VIEW)

NOTES:

- 3. TRACE KEEP OUT ZONE.
- 4. RECOMMENDED P.C.B. THICKNESS: 1.57±0.05[.062±.002].

REMARK:

PROD. NO.: 2F 1 2 T C 1 - E S 9 3 - 4F

Plastic Fiber Optical ———— Package Code

Terminator Type ———— Modification Code
1= R/A through hole

Body Type: ———— Color Code
2= Stack

Driver Type ———— Mating Type:
T=Transmitter

Transmission Speed ———— Customer Code
C=13.2 Mbps

CONTACT PLATING
1= Gold Flash

| | | | | | | | | | | | |
|--|--------|--------------------------|--------------|--------------------------------|--|-------|-------|------|-----|-----|---|
| X. ± | X'. ± | UNITS | mm [INCH] | NAME(INTENDED USE) | FOXCONN | | | | | | |
| .X ± 0.10 [.004] | .X' ± | MAT'L | | CUSTOMER | HON HAI PRECISION IND. CO.,LTD. TAIPEI, TAIWAN, R.O.C. | | | | | | |
| .XX ± 0.05 [.002] | .XX' ± | | N/A | PART NO.(INTENDED USE) | TITLE: MINI DIN 4PIN W/GROUNDING OVER AC-3 STACK | | | | | | |
| .XXX± | .XXX'± | FINISH | N/A | APPD: Adward Zheng 10/16'08 | DWG NO.: 371-0000-195 | | | | | | |
| <small>THESE DRAWINGS AND SPECIFICATIONS ARE THE PROPERTY OF HON HAI PRECISION IND. CO., LTD. AND SHALL NOT BE REPRODUCED COPIED OR USED IN ANY MANNER WITHOUT THE PRIOR WRITTEN CONSENT OF HON HAI PRECISION IND. CO., LTD.</small> | | | | CHKD: Jesse Wang 10/16'08 | <table border="1"> <tr> <td>SCALE</td> <td>SHEET</td> <td>REV.</td> </tr> <tr> <td>N/A</td> <td>2/2</td> <td>A</td> </tr> </table> | SCALE | SHEET | REV. | N/A | 2/2 | A |
| | | | | SCALE | | SHEET | REV. | | | | |
| | | | | N/A | | 2/2 | A | | | | |
| Q'TY | N/A | DR: ShuYu Li 10/16'08 | | | | | | | | | |