

SPECIFICATIONS

Mechanical

Contact Engagement Force: 12Oz max. Use 1.58mm Thick Gage.
Contact Separation Force: 10z max. Use 1.37mm Thick Gage.
Durability: 500 Cycles min.
Contact Retention Force: 4Lbs min.

Electrical

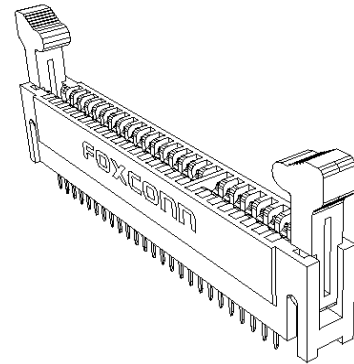
Current Rating: 4.26A max. (VRM 9.1); 5.53A max. (VRM10.0 & VRM 10.1).
Voltage Rating: AC 250V
Contact Resistance: 15mΩ max.
Dielectric Withstanding Voltage: 1000V
Insulation Resistance: 5000MΩ min.

Physical

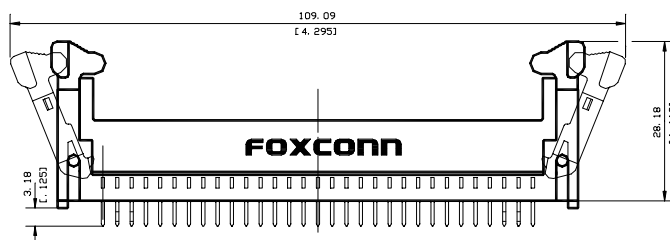
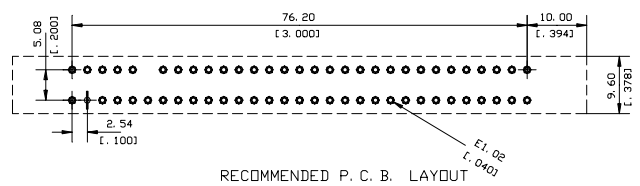
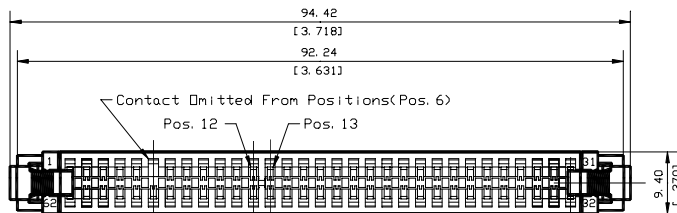
Housing: Thermoplastic, UL 94V-0 rated, Black Color
Latch: Thermoplastic, UL 94V-0 rated, Black Color
Contact: Copper Alloy
Plating: See "ORDERING INFORMATION"
Operating Temperature: -55°C to +105°C

VRM 9.1 Connector

Edge Card Connector
 Vertical, T/H Type
 2.54 mm [.10"] Pitch
 61 Pos.



DRAWING



ORDERING INFORMATION

PRODUCT NO.: 2 E V 0 3 D 0 3 - P W

2E=Edge Card Connector

V=VRM Type

0=Straight

. of Pos.

=61Pos. (Key Pos. at 12-13 W/O Pos.6)

Tail Length
 0=3.18mm(.125")

Contact Area Plating
 3=30u" min. Gold

W=With Latch Type

P=PBT, Black Color