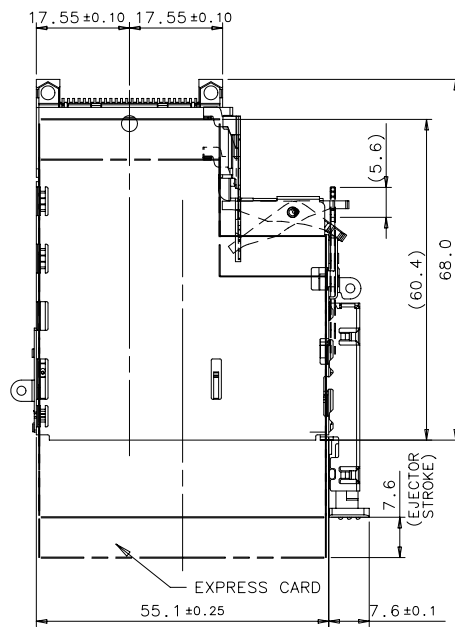
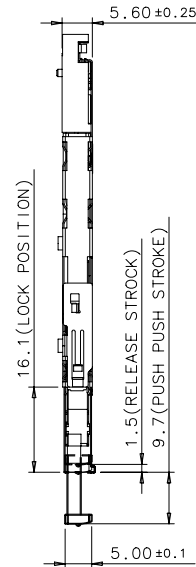
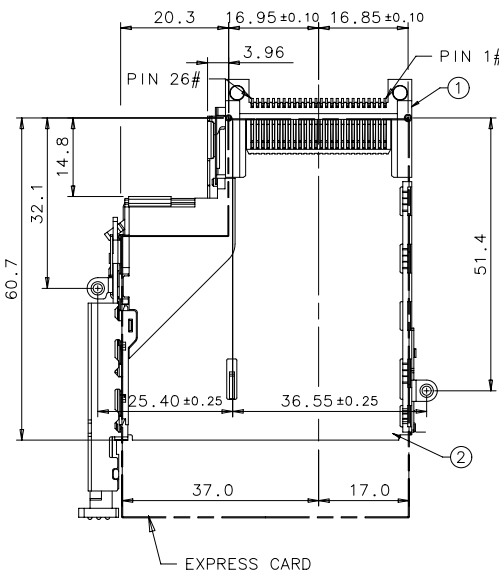
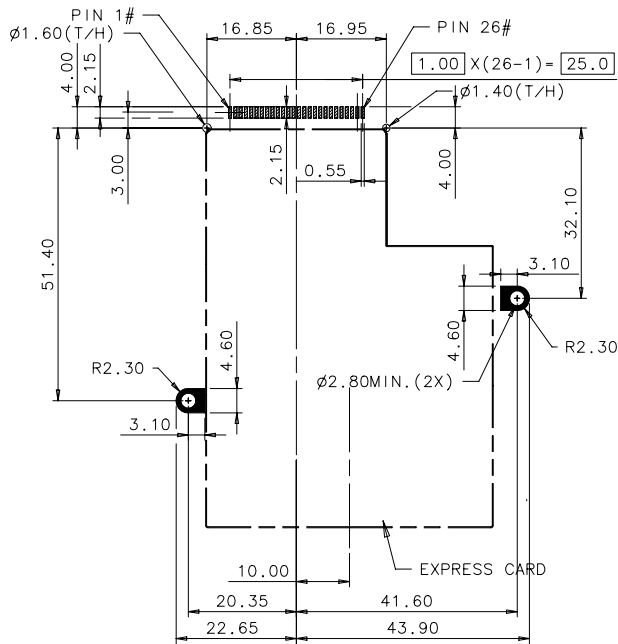


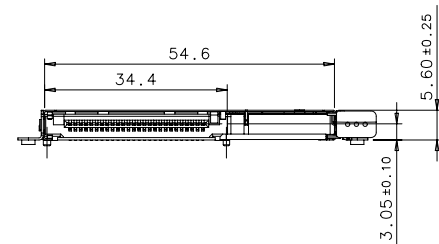
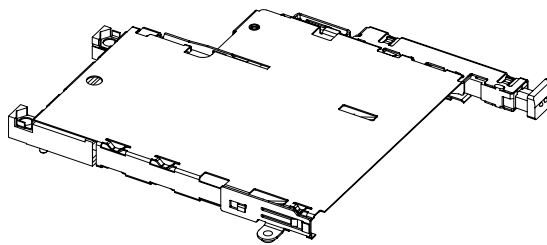
IDEAS GENERATED DRAWING, DON'T CHANGE BY HAND.

REV.	ECN. NO.	APPD.
X1	SMBTB18-50518	BRUCE WU



RECOMMENDED PCB LAYOUT

- SOLDER PAD
- GROUNDING PAD
- EXPRESS CARD AREA



ITEM	COMPONENT P/N	QTY	DESCRIPTION
①	1CH4110C-CT	1	HEADER ASSEMBLY
②	1CX41202-CA	1	GUIDERAIL FRAME WITH EJECTOR

PROPOSAL

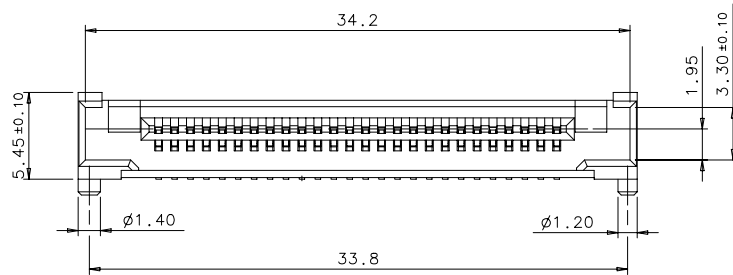
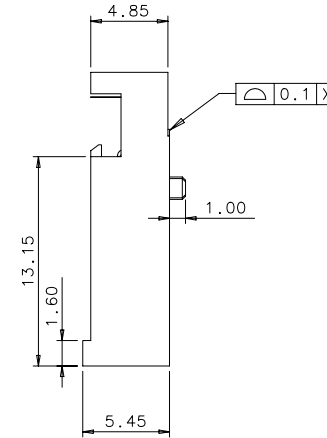
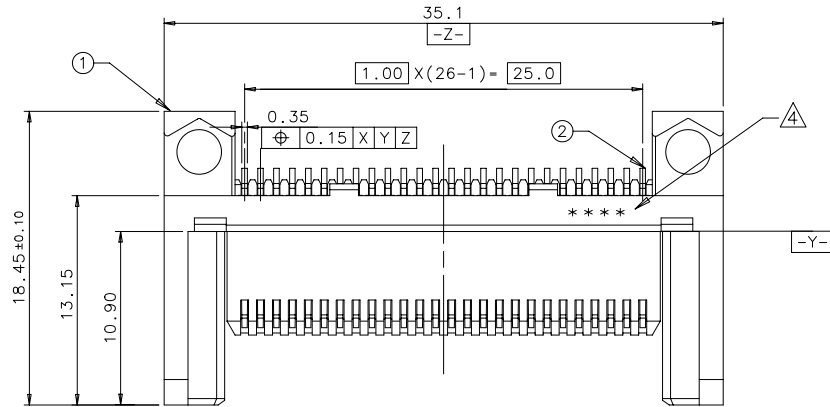
NOTES:

- THE CONNECTOR WILL ACCEPT A EXPRESS CARD OF TYPE 1 OR TYPE 2 WHICH IS RELEASED BY " EXPRESS CARD STANDARD "
- THE SCREWS ARE APPLIED FOR 1.5 Kg-cm MAXIMUM TORQUE TO FIT.
- THE LENGTH OF SCREW IS SUGGESTED FROM 2.0 mm TO 2.5 mm.
- THIS IS A LEAD FREE PRODUCT.

X. ± 0.35	X. ° ±	UNITS mm	NAME (INTENDED USE) EXPRESS CARD HOST CONNECTOR (TYPE 11/NORMAL)	FOXCONN HON HAI PRECISION IND. CO., LTD. TAIPEI, TAIWAN, R.O.C.	
.X ± 0.25	.X ° ±	MAT'L			
.XX ± 0.05	.XX ° ±	FINISH	PART NO. (INTENDED USE) 1CX41202-CA 1CH4110C-CT	TITLE: CUSTOMER DRAWING	
.XXX ±	.XXX ° ±		Q'TY	APPD: BRUCE WU 05/18'05	DWG NO.: 331-0000-CT6A
THESE DRAWINGS AND SPECIFICATIONS ARE THE PROPERTY OF HON HAI PRECISION IND. CO., LTD. AND SHALL NOT BE REPRODUCED, COPIED OR USED IN ANY MANNER WITHOUT THE PRIOR WRITTEN CONSENT OF HON HAI PRECISION IND. CO., LTD.			CHKD: SEVEN KUO 05/18'05	DR: ANDREW DING 05/18'05	SCALE SHEET REV. N/A 1/3 X1

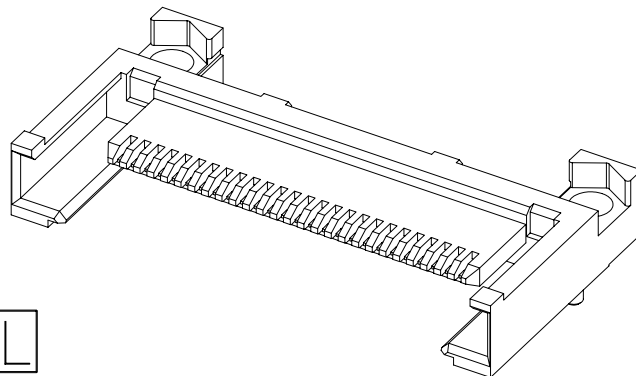
IDEAS GENERATED DRAWING, DON'T CHANGE BY HAND.

REV.	ECN. NO.	APPD.



NOTES:

- ELECTRICAL SPECIFICATION:
 - 1-1 CONTACT CURRENT RATING : $\Delta T < 30^{\circ}C$ AT 0.75 AMPERE PER PIN.
 - 1-2 DIELECTRIC WITHSTANDING VOLTAGE : 500V AC MAXIMUM.
 - 1-3 INSULATION RESISTANCE : 100 MEGOHMS MINIMUM AFTER TEST.
 - MECHANICAL SPECIFICATION:
 - 2-1 CONNECTOR MATING FORCE : 39 N MAXIMUM AT 12.5 mm/Min.
 - 2-2 CONNECTOR UNMATING FORCE : 3.7 N MINIMUM 18.5 N MAXIMUM AT 12.5 mm/Min.
 - 2-3 DURABILITY : 10,000 CYCLES.
 - ENVIRONMENT SPECIFICATION:
 - 3-1 OPERATING TEMPERATURE: $0^{\circ}C$ TO $+55^{\circ}C$, 95% RH MAXIMUM.
- ▲ DATE CODE IS PRINTED BY THE BLACK INK ON THE SIDE. HEIGHT=2.0mm.
 5. THIS IS A LEAD FREE PRODUCT.

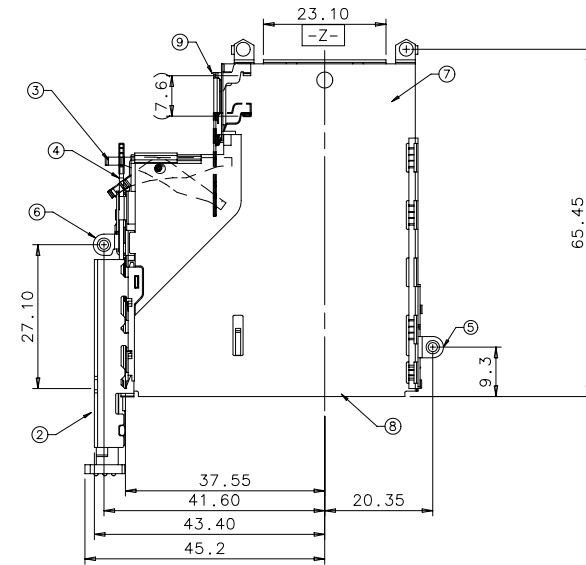
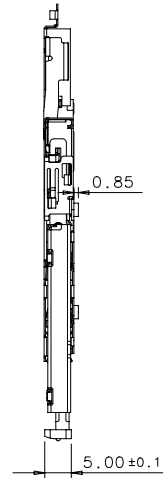
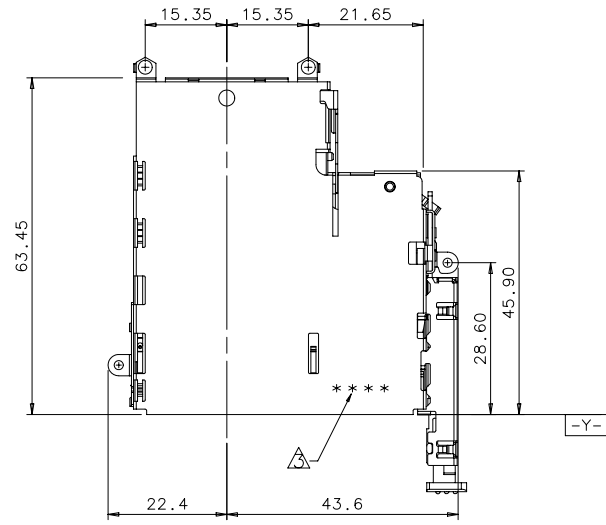


PROPOSAL

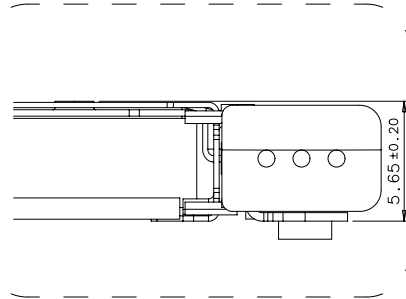
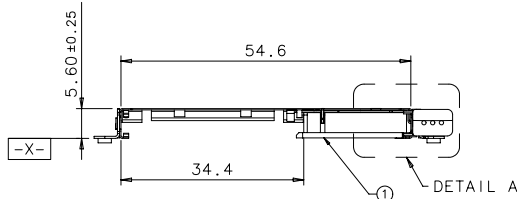
②	CONTACT PIN	26	COPPER ALLOY	GOLD PLATING AT CONTACT AREA. TIN PLATING AT TERMINATION NICKEL UNDERPLATING OVERALL.	
①	HOUSING	1	HI-TEMP THERMOPLASTIC UL 94V-0	MOLDED COLOR: BLACK	
ITEM	DESCRIPTION	QT'Y	MATERIAL	FINISH	REMARK
X. ± 0.35	X. ° ±	UNITS	mm	NAME (INTENDED USE) EXPRESS CARD HOST CONNECTOR (TYPE II/NORMAL)	FOXCONN HON HAI PRECISION IND. CO., LTD. TAIPEI, TAIWAN, R.O.C.
.X ± 0.25	.X ° ±	MAT'L		PART NO. (INTENDED USE) 1CH4110C-CT	
.XX ± 0.05	.XX ° ±			APPD: BRUCE WU 05/18'05	TITLE: CUSTOMER DRAWING
.XXX ±	.XXX ° ±	FINISH		DR: ANDREW DING 05/18'05	DWG NO.: 331-0000-CT6A
THESE DRAWINGS AND SPECIFICATIONS ARE THE PROPERTY OF HON HAI PRECISION IND. CO., LTD. AND SHALL NOT BE REPRODUCED, COPIED OR USED IN ANY MANNER WITHOUT THE PRIOR WRITTEN CONSENT OF HON HAI PRECISION IND. CO., LTD.		Q'TY		CHKD: SEVEN KUO 05/18'05	SCALE SHEET REV. N/A 2/3 X1

IDEAS GENERATED DRAWING, DON'T CHANGE BY HAND.

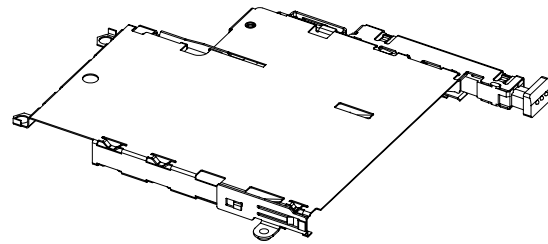
REV.	ECN. NO.	APPD.



PROPOSAL



DETAIL A
SCALE 4:1



- NOTES:
1. THE SCREWS ARE APPLIED FOR 1.5 Kg-cm MAXIMUM TORQUE TO FIT.
 2. THE LENGTH OF SCREW IS SUGGESTED FROM 2.0 mm TO 2.5 mm.
 3. DATE CODE IS PRINTED BY THE BLACK INK ON THE SIDE. HEIGHT=2.0mm.
 4. THIS IS A LEAD FREE PRODUCT.

⑨	DRAWER PLATE	1	STAINLESS	MOLDED COLOR : CLEAN		
⑧	BOTTOM PLATE	1		MOLDED COLOR : CLEAN		
⑦	SHELL	1		MOLDED COLOR : CLEAN		
⑥	STANDOFF (RIGHT)	1		MOLDED COLOR : CLEAN		
⑤	STANDOFF (LEFT)	1		MOLDED COLOR : CLEAN		
④	METAL BAR	1		MOLDED COLOR : CLEAN		
③	LEVER	1		MOLDED COLOR : CLEAN		
②	EJECTOR MODULE	1		HI-TEMP THERMOPLASTIC UL 94V-0 & STAINLESS	MOLDED COLOR : BROWN & CLEAN	
①	GUIDERAIL	1		HI-TEMP THERMOPLASTIC UL 94V-0	MOLDED COLOR : BLACK	
ITEM	DESCRIPTION	QT'Y	METERIAL	FINISH	REMARK	

X. ± 0.35	X. ° ±	UNITS	mm	NAME (INTENDED USE) EXPRESS CARD HOST CONNECTOR (TYPE II/NORMAL)	FOXCONN HON HAI PRECISION IND. CO., LTD. TAIPEI, TAIWAN, R.O.C.	
.X ± 0.25	.X ° ±		MAT'L			
.XX ± 0.20	.XX ° ±	FINISH	PART NO. (INTENDED USE) 1CX41202-CA			TITLE: CUSTOMER DRAWING
.XXX ±	.XXX ° ±		Q'TY			APPD: BRUCE WU 05/18'05
THESE DRAWINGS AND SPECIFICATIONS ARE THE PROPERTY OF HON HAI PRECISION IND. CO., LTD. AND SHALL NOT BE REPRODUCED, COPIED OR USED IN ANY MANNER WITHOUT THE PRIOR WRITTEN CONSENT OF HON HAI PRECISION IND. CO., LTD.				CHKD: SEVEN KUO 05/18'05	DR: ANDREW DING 05/18'05	
			SCALE	SHEET	REV.	
			N/A	3/3	X1	

