

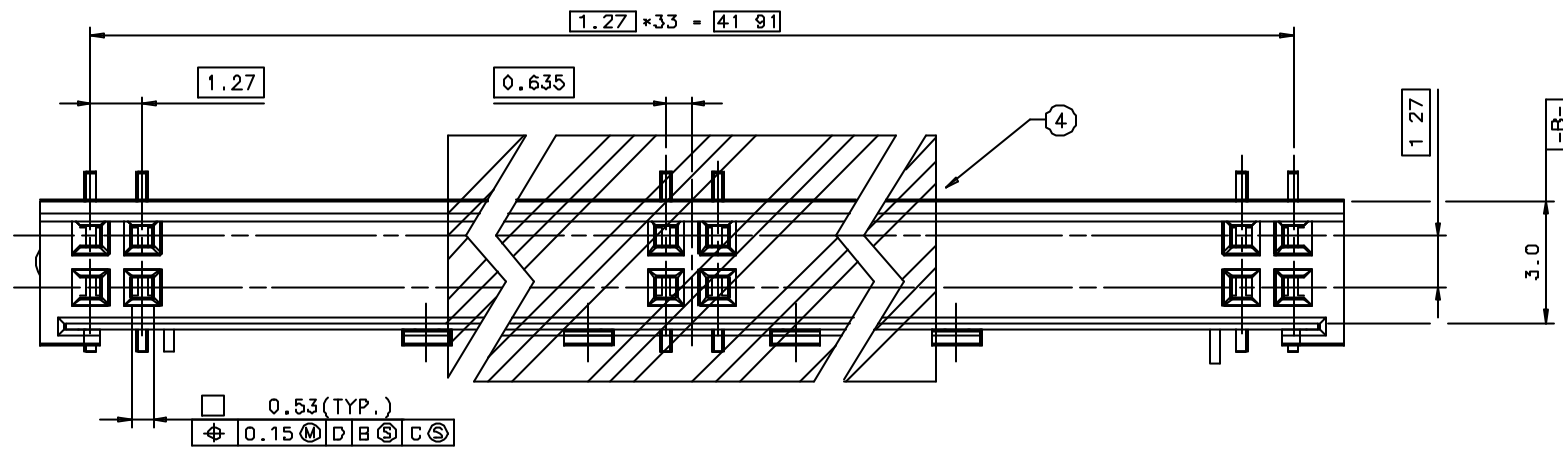


IDEAS GENERATED DRAWING, DON'T CHANGE BY HAND

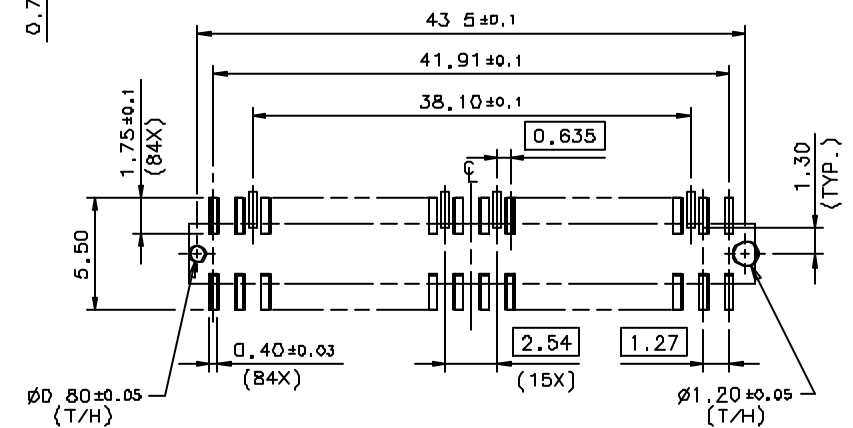
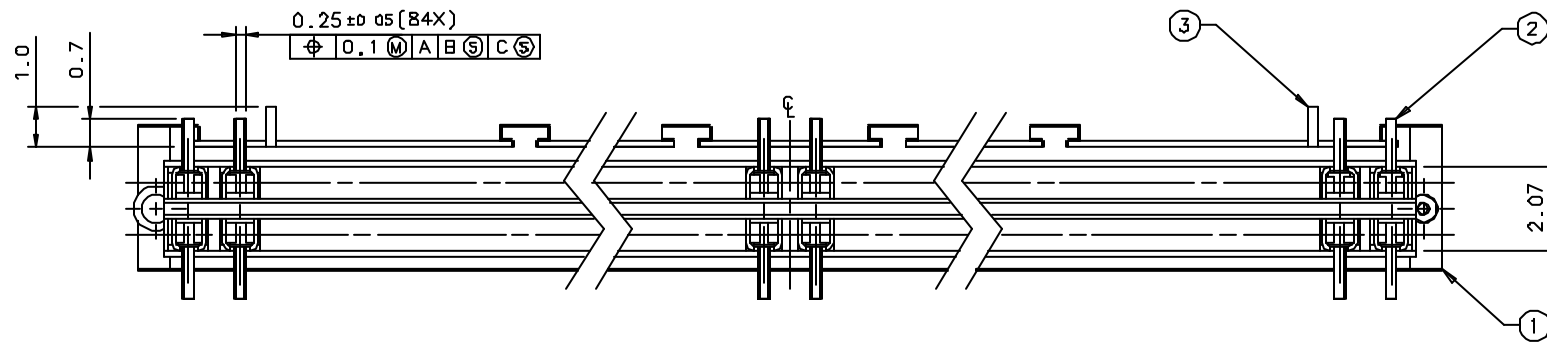
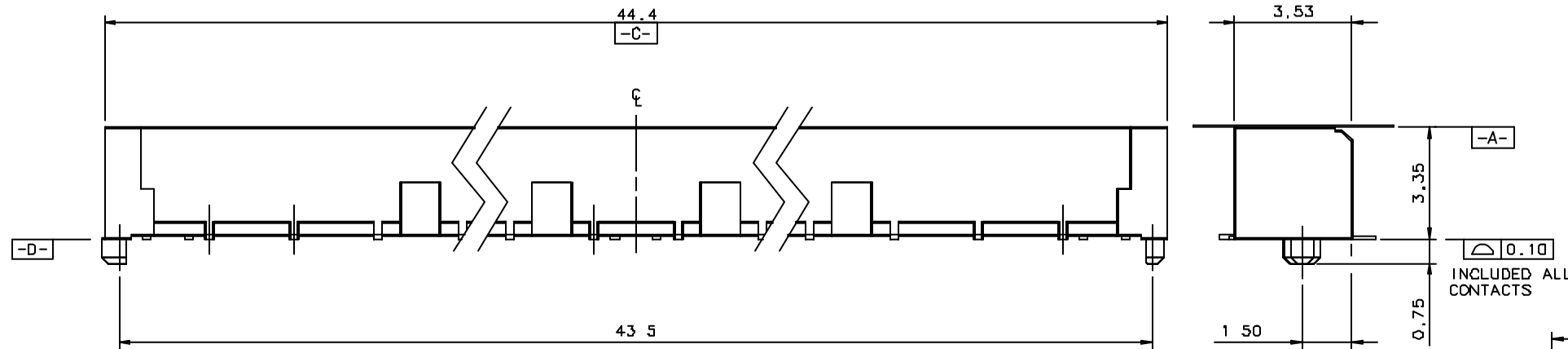
REV.	ECN NO.	APPD.

NOTES:

- CONTACT FINISH: 50 μ MIN. NICKEL UNDER PLATING OVERALL.  
1-6 μ GOLD PLATING OVERALL.
- THE SOCKET HAD BETTER USED IN THE FOLLOWING CONDITIONS:  
2-1. NO MORE THAN 20 CYCLES MATING/UNMATING.  
2-2. DIA. OF THE INSERTING MALE PIN RANGING FROM 0.4 TO 0.5 mm.



COMPONENT PARTS LIST			
ITEM	COMPONENT	Q'TY	MATERIAL
1	HOUSING	1	LCP, NATURAL
2	SOCKET PIN	68	PHOSPHOR BRONZE
3	SHIELDING SHELL	1	PHOSPHOR BRONZE
4	PI FILM	1	POLYIMIDE FILM



X ± 0.5	X' ±	UNITS mm	NAME (INTENDED USE)	<b>FOXCONN</b> HON HAI PRECISION IND. CO., LTD. TAIPEI, TAIWAN, R.O.C.
.X ± 0.35	.X' ±	MAT'L	Rear Socket	
.XX ± 0.25	.XX' ±	FINISH	PART NO (INTENDED USE)	TITLE: CUSTOMER DRAWING
.XXX ±	.XXX' ±		Q'TY	WZ21131-P4-8F
<small>THESE DRAWINGS AND SPECIFICATIONS ARE THE PROPERTY OF HON HAI PRECISION IND. CO., LTD. AND SHALL NOT BE REPRODUCED, COPIED OR USED IN ANY MANNER WITHOUT THE PRIOR WRITTEN CONSENT OF HON HAI PRECISION IND. CO., LTD.</small>			APPD MAX WU 05/28/05	SCALE SHEET REV.
			CHKD CHEERY CHEN 05/28/05	
			DR Yicai Luo 05/27/05	