

SPECIFICATIONS

Mechanical

Operating Force & Durability:

100±30gf	1000000 Cycles
130±40gf	1000000 Cycles
160±50gf	1000000 Cycles
260±80gf	100000 Cycles

Travel: 0.25±0.1mm

Solder ability: 240 max. 20s min.
260 max. 20s min. (Lead free)

Electrical

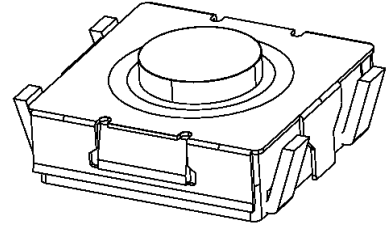
Rating: 20mA max. 15V DC max.
Contact Resistance: 50m max.
Insulation Resistance: 50M min.
Dielectric Withstanding Voltage: 250V AC for 1 Minute
Bounce: on Bounce 3ms max. Off Bounce 8ms max.

Physical

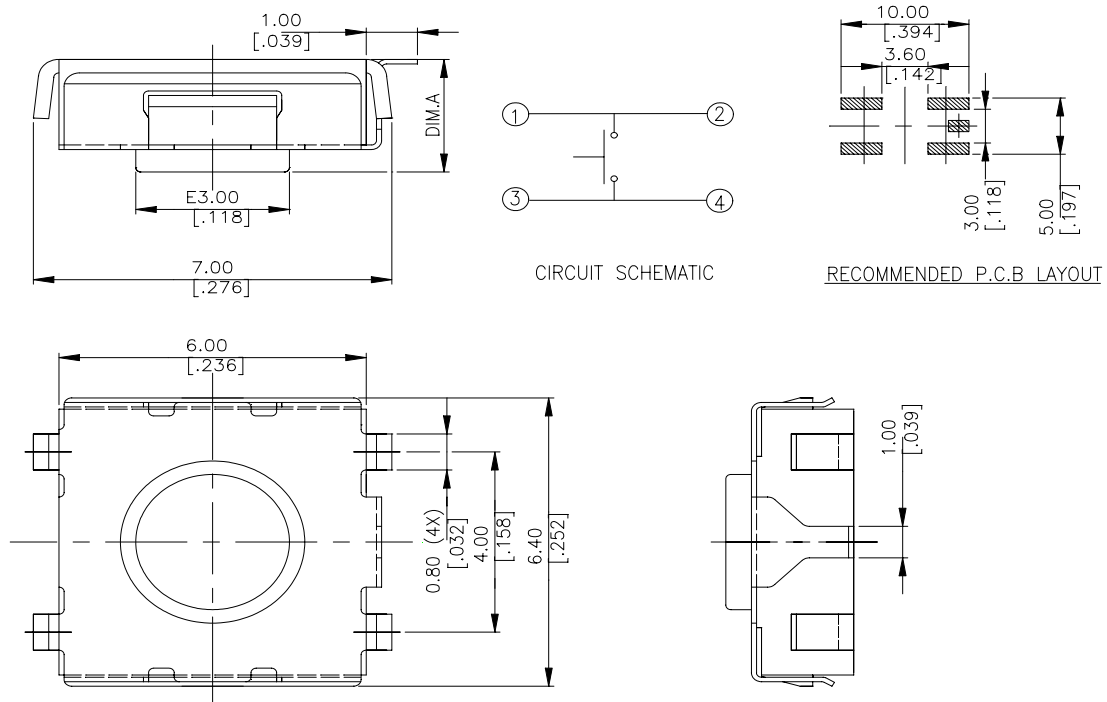
Operating Temperatures: -20 to +70
Package: 3000PCS/Reel, 10Reels/Box. (1BT001-13*1*)
2500PCS/Reel, 10Reels/Box. (1BT001-14*1*)

Tact Switch

1BT001
J SMT Type,
W/O Ground



DRAWING



ORDERING INFORMATION

PRODUCT NO.: 1BT001-1****-****

Switch Series	Plating:	Modification Code:
Tact Type	0=Standard	None=w/o Ground
Product Series	L=lead free	001=w/ Ground
Prod. Size: 1=6.2mm*6.2mm	Terminal:	
Total Height:	0=L SMT	
2=2.0mm	1=J SMT	
3=2.5mm	Operating Force:	
4=3.1mm	1=100gf	
	2=160gf	
	3=260gf	
	4=130gf	

1BT001-1441*	130±40gf	3.1 [.122]
1BT001-1431*	260±80gf	3.1 [.122]
1BT001-1421*	160±50gf	3.1 [.122]
1BT001-1411*	100±30gf	3.1 [.122]
1BT001-1341*	130±40gf	2.5 [.098]
1BT001-1331*	260±80gf	2.5 [.098]
1BT001-1321*	160±50gf	2.5 [.098]
1BT001-1311*	100±30gf	2.5 [.098]
P/N	OPERATING FORCE	DIM. A