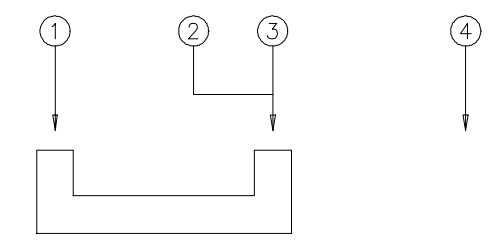


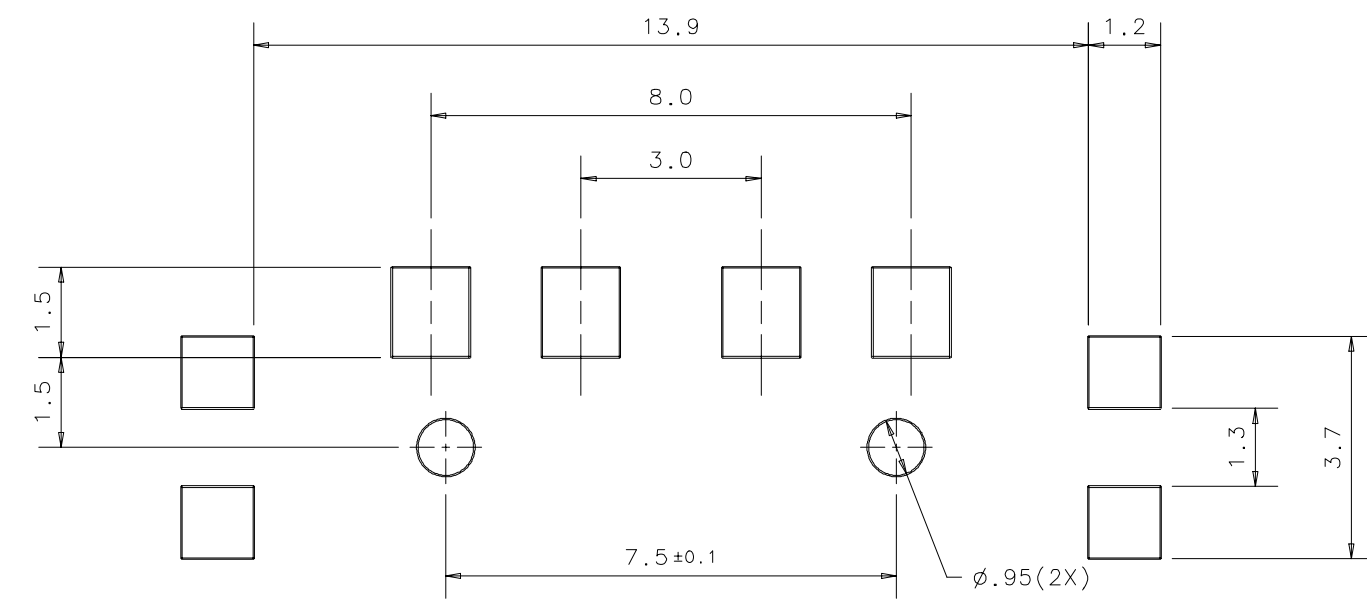
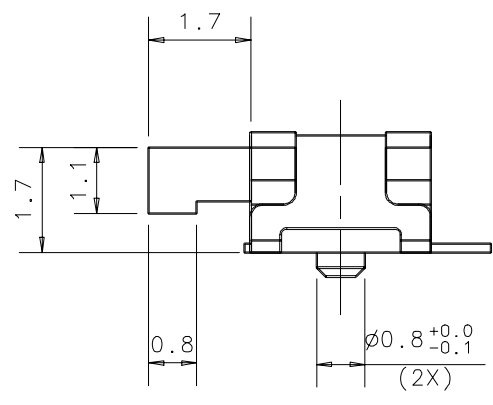
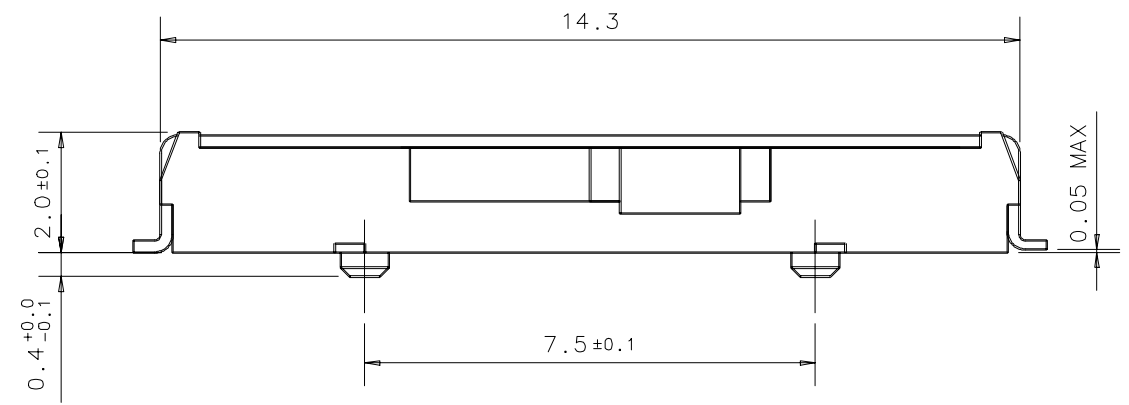
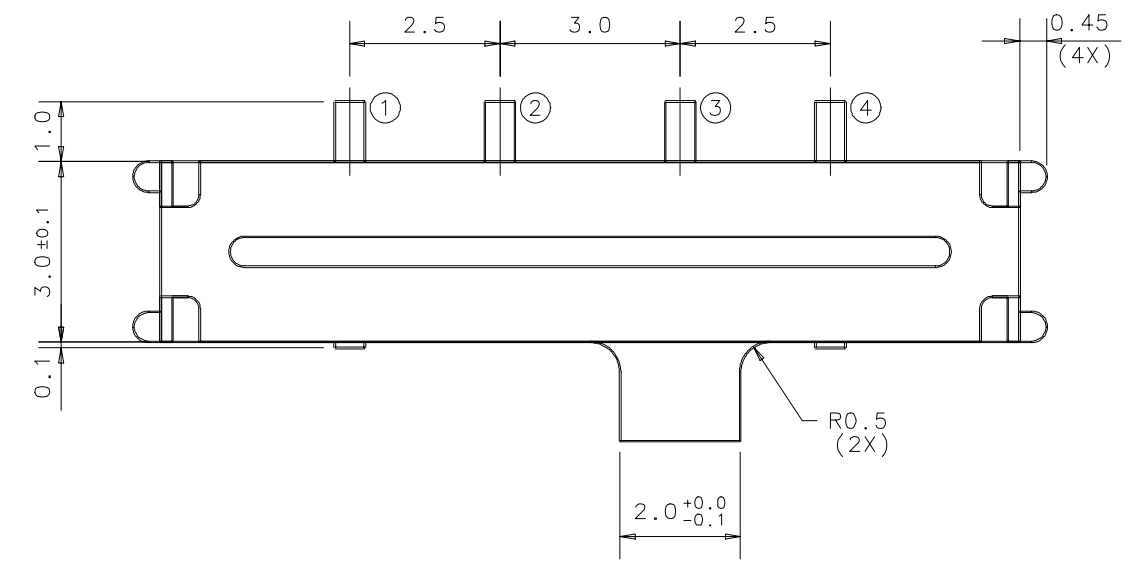
REV.	ECN. NO.	APPD.
A	HC-03-6922	J.S.Liou
B	HC-04-10942	N.Hasegawa

NOTES:
1. ELECTRICAL CHARACTERISTICS.
1.1 CURRENT RATING: 0.4A.
1.2 VOLTAGE RATING: 5V DC.
1.3 CONTACT RESISTANCE: 100mΩ MAX.
1.4 INSULATION RESISTANCE: 10MΩ MIN AT 100V DC.
1.5 DIELECTRIC STRENGTH: 100V AC FOR 1 MINUTE.
2. MECHANICAL CHARACTERISTICS
2.1 LIFE CYCLE: 50,000 CYCLES.
2.2 TRAVEL: 3mm±0.2mm.
2.3 OPERATING FORCE: 1N(102gf) MAX.
3. HARMFUL MATERIAL CONTROL PLEASE FOLLOW DOC. "EPI12".
4. GENERAL DIMENSION TOLERANCE: ±0.3MM.
△ PART LIST:

ITEM	MATERIAL	REMARK
TOP COVER	COPPER ALLOY	Sn-PLATED 100u" MIN.
MOVING CONTACT	COPPER ALLOY	Ag-PLATED 40u" MIN.
TERMINAL	COPPER ALLOY	Ag-PLATED 40u" MIN.
I/M HOUSING	THERMOPLASTIC	BLACK
SLIDER	THERMOPLASTIC	BLACK



CIRCUIT DIAGRAM
(SPDT)



RECOMMENDED PCB LAYOUT

X. ± 0.3	X. ° ±	UNITS MM	NAME (INTENDED USE)	FOXCONN HON HAI PRECISION IND. CO., LTD. TAIPEI, TAIWAN, R.O.C.
.X ± 0.3	.X ° ±	MAT'L	SLIDE SWITCH	
.XX ± 0.3	.XX ° ±	△	PART NO. (INTENDED USE)	TITLE: CUSTOMER DRAWING FOR SLIDE SWITCH
.XXX ±	.XXX ° ±		1BS002-12131 Ⓢ 1BS002-1213L	
THESE DRAWINGS AND SPECIFICATIONS ARE THE PROPERTY OF HON HAI PRECISION IND. CO., LTD. AND SHALL NOT BE REPRODUCED, COPIED OR USED IN ANY MANNER WITHOUT THE PRIOR WRITTEN CONSENT OF HON HAI PRECISION IND. CO., LTD.			APPD: N.Hasegawa 12/27'04	DWG NO.: 335-0000-1007
			Q'TY 1	CHKD: Alex Wu 12/24'04 DR: Lendy Zhu 12/3'04
				SCALE SHEET REV. 8/1 1/1 B

