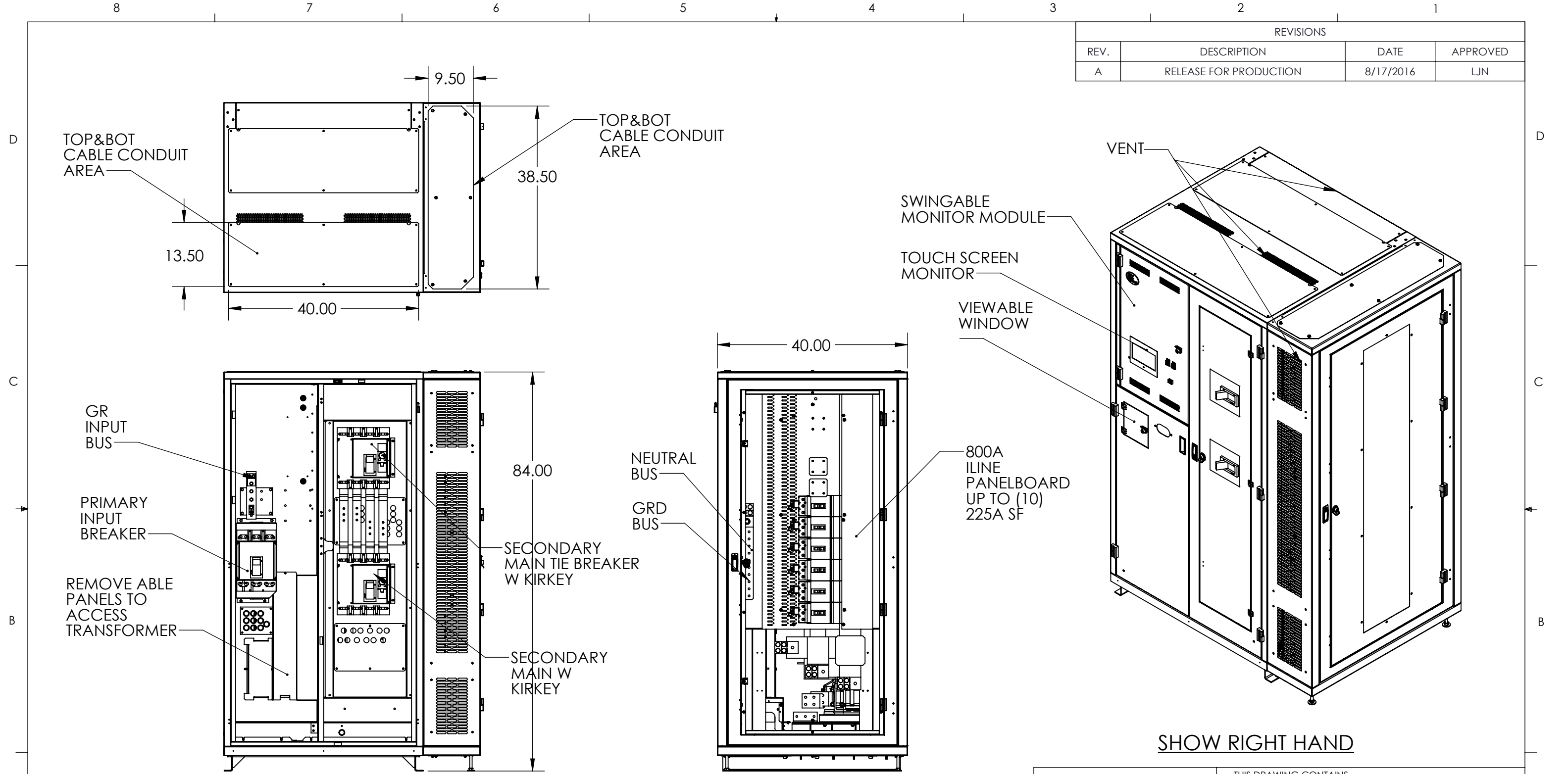


REVISIONS			
REV.	DESCRIPTION	DATE	APPROVED
A	RELEASE FOR PRODUCTION	8/17/2016	LJN



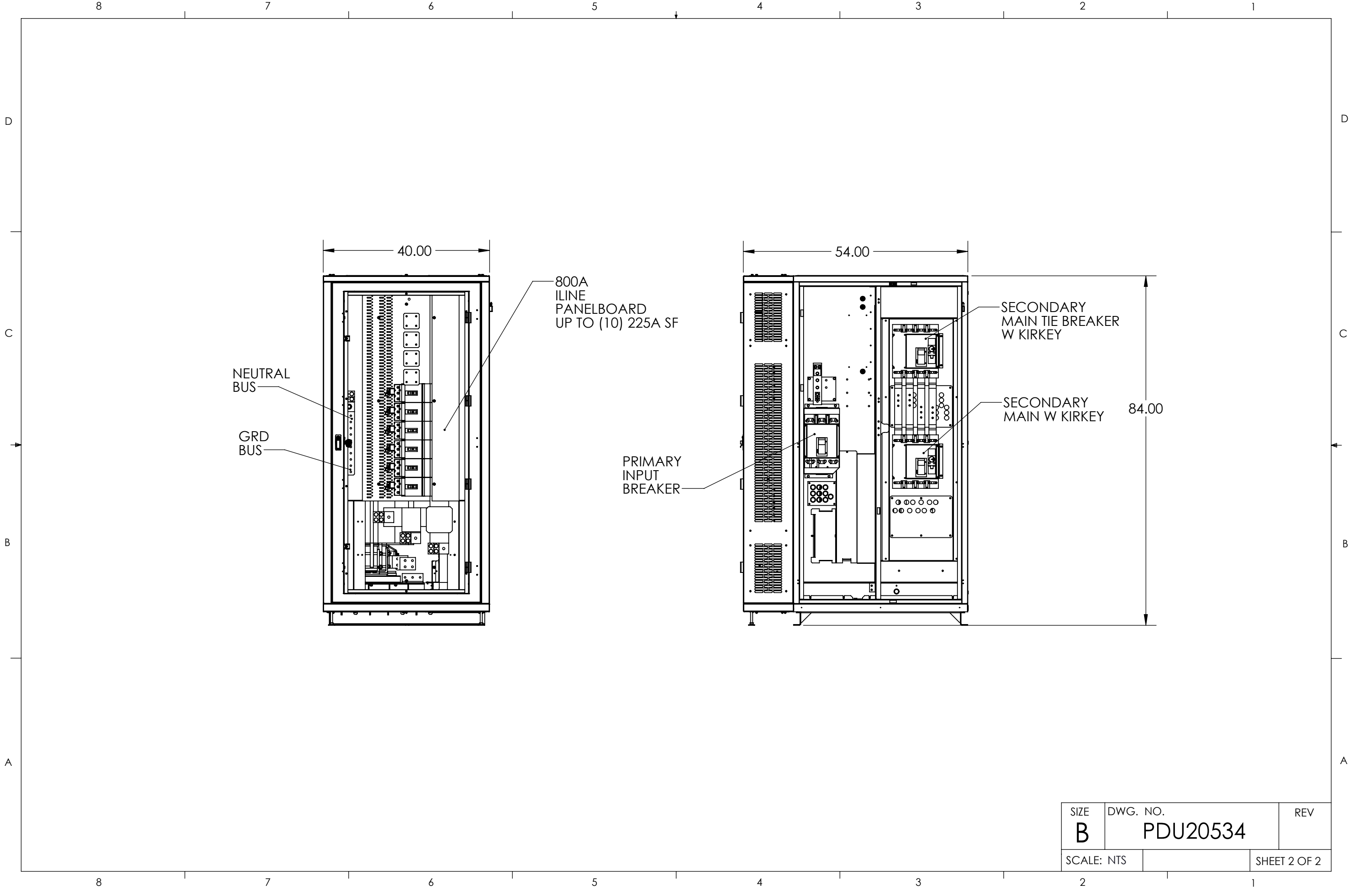
GENERAL SPECIFIED

CABINET CHARACTERISTIC: ENCLOSURE : NEMA 1, LOCATION : INDOOR
 MECHANICAL: MATERIAL: STEEL
 FINISH: EXTERIOR PANELS: PEARL WHITE - PHTI-60016
 WEIGHT : 3100 LBS. APPROX.
 ELECTRICAL:
 INPUT : 480 VAC 3PH-3W W/GND @ 60 HZ,
 OUTPUT : 800A ILINE PANEL BOARD
 SEE PAGE 2 FOR LEFT HAND

DOOR AND
 PANEL
 REMOVED

SHOW RIGHT HAND

UNLESS OTHERWISE SPECIFIED: DIMENSIONS ARE IN INCHES [] IN MILLIMETER ANGULAR: ±0.5° BEND ±1° TWO PLACE DECIMAL ±0.02 THREE PLACE DECIMAL ±0.005		THIS DRAWING CONTAINS CONFIDENTIAL & PROPRIETARY INFORMATION AND SHALL NOT BE DISCLOSED OR COPIED WITHOUT THE EXPRESSED, WRITTEN PERMISSION OF SMITHS POWER		PDI
THIRD ANGLE PROJECTION		DO NOT SCALE DRAWING		
APPROVALS		DATE		TITLE: PDU OUT LINE
DRAWN	LJN	6/17/16		300KVA, SECONDARY MAIN W TIE BREAKER, 800 ILINE
CHECKED	IS	6/17/16		SIZE B
ENG. APPR.				DWG. NO. PDU20534
				REV A
		PART NO.		SHEET 1 OF 2



SIZE B	DWG. NO. PDU20534	REV
SCALE: NTS	SHEET 2 OF 2	