

### Model Comparison

Model	VRRM VDRM(V)	ITAVIFAV(A)
CTD165GK08	800	181
CTD165GK12	1200	181
CTD165GK14	1400	181
CTD165GK16	1600	181
CTD165GK18	1800	181

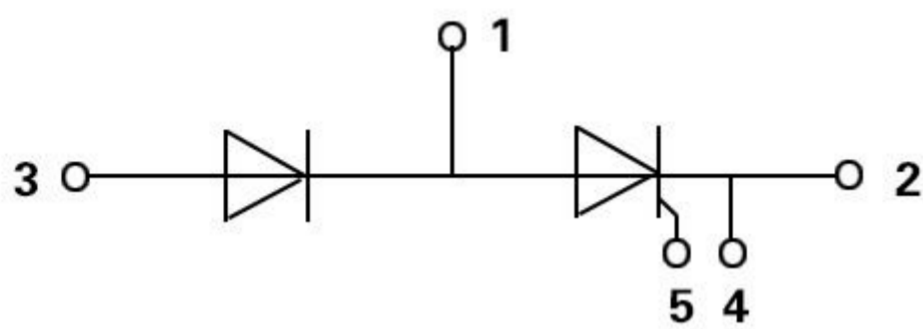
### Features / Advantages

- Thyristor for line frequency
- Planar passivated chip
- Long-term stability
- Direct Copper Bonded Al<sub>2</sub>O<sub>3</sub>-ceramic

### Applications

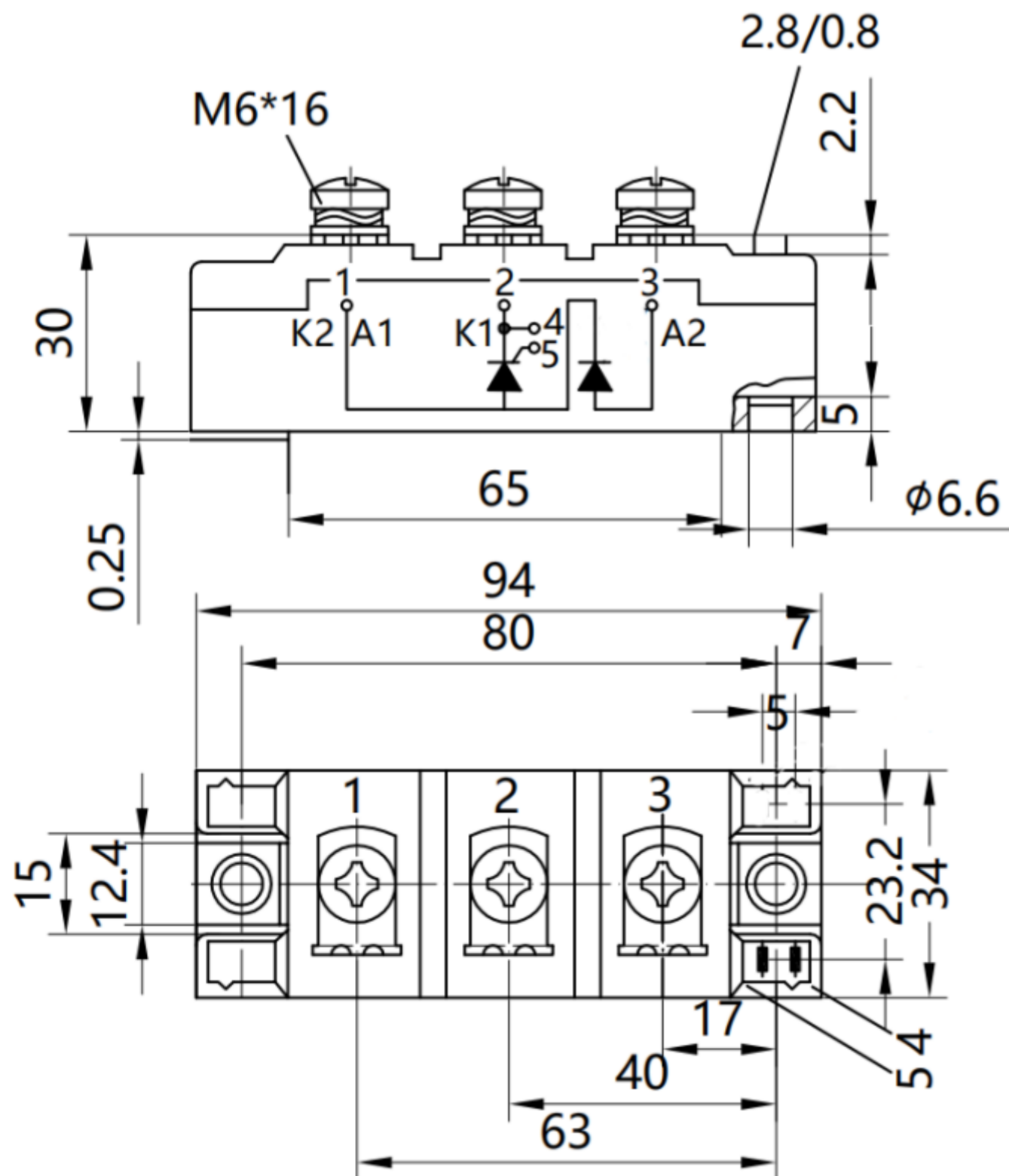
- Line rectifying 50/60 Hz
- Softstart AC motor control
- DC Motor control
- Power converter
- AC power control
- Lighting and temperature control

### Internal Circuit



### Package Dimension

Dimensions in Millimeters



### Parameters

Parametrics	CTD165GK08~18
$V_{DRM} V_{RRM}$	800~1800V
$I_{TAV} I_{FAV}$ @TC	181A
$T_C$	85°C
$I_{TSM} I_{FSM}$ @10ms, $T_{vj}$ max	6000A
$V_{(T0)}$ @ $T_{vj}$ max	0.88V
Package style Outline drawings	XTB